

NPN

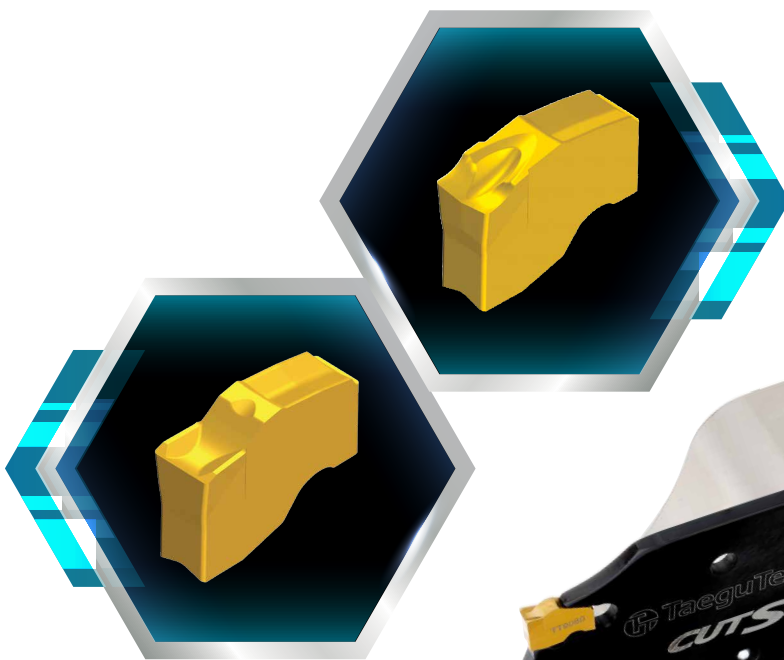
New Product News



CUTSPEED

HIGH FEED PARTING

Reinforced Triangular Blades and Blocks for Parting and Deep Grooving Applications



KEY POINT

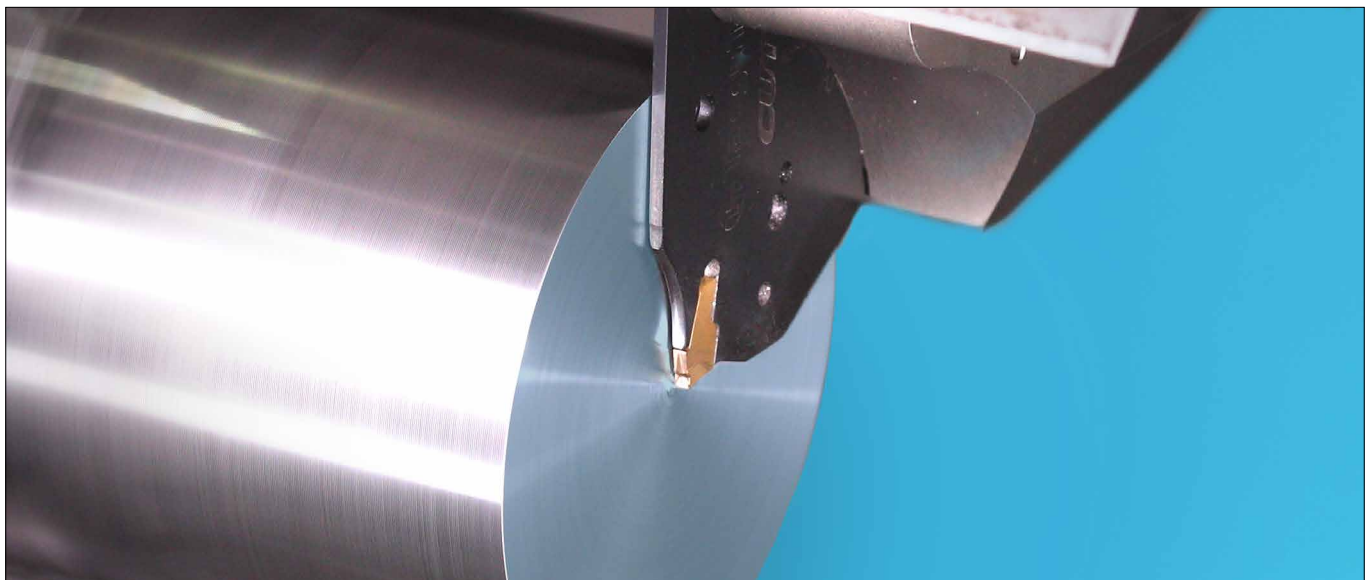
Now available for TaeguTec's CUT-SFEED line, reinforced triangular blades and blocks for parting and deep grooving applications.

The CUT-SFEED line now includes enhanced SFTB and TGTB triangular blade types for the T-Clamp line, both with three insert pockets.

The triangular blade types (SFTB, TGTB) and dedicated block (THTBR/L-TB) are superior in rigidity, minimize vibration and provide excellent machining surface roughness in general conditions and even in high feed or interrupted machining conditions. The block includes the drop head and double contact with the turret enabling a highly stable clamping structure, thus contributing to increased productivity and tool life.

Features

- Economical 3 insert pocket blade
- High rigidity triangular blades and dedicated blocks
 - Stable machining performance under general conditions
 - Stable machining performance even in interrupted or unstable conditions
 - Less vibration, excellent surface roughness and improved straightness
 - Stable structure allows high feed and interrupted machining
- Triangular rigid blades for T-Clamp inserts are also available
- Available for all equipment, including multitask machines and general CNC machines
- Maximum diameter Ø120 mm bar can be cut with 2 & 3 mm width inserts: reduces material costs
- Saves set-up time when replacing the pocket - Maintains high precision even after the pocket is changed

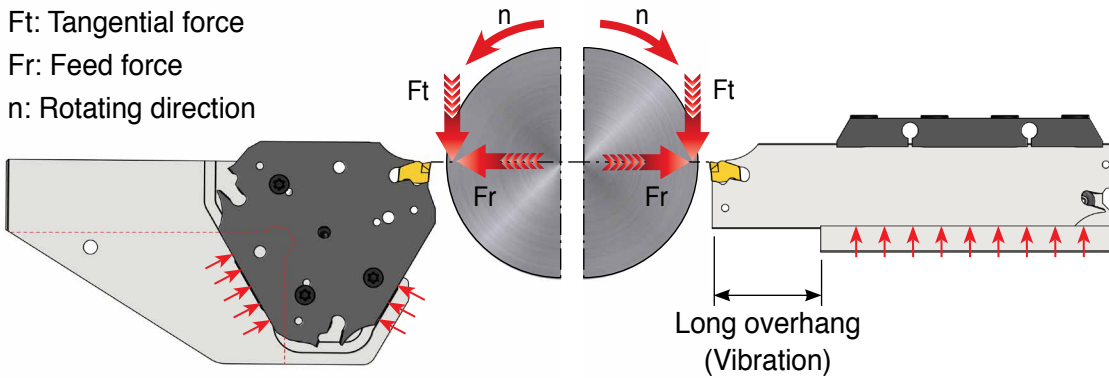


Forces distribution: Triangular blade vs. Conventional blade

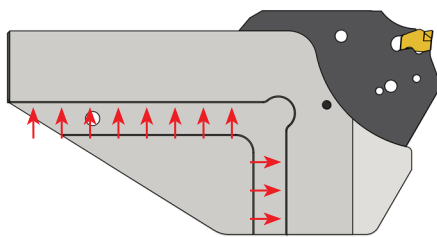
Ft: Tangential force

Fr: Feed force

n: Rotating direction

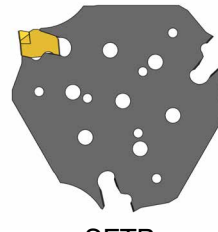


Triangular blade with enhanced rigidity and stable support structure (Vibration free)

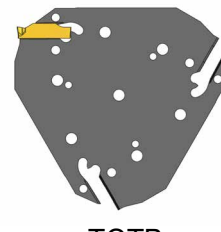


The block includes the drop head and double contact with the turret enabling a highly stable clamping structure

CUT-SPEED insert (SFC & SFJ)



T-Clamp insert (TSC & TSJ)

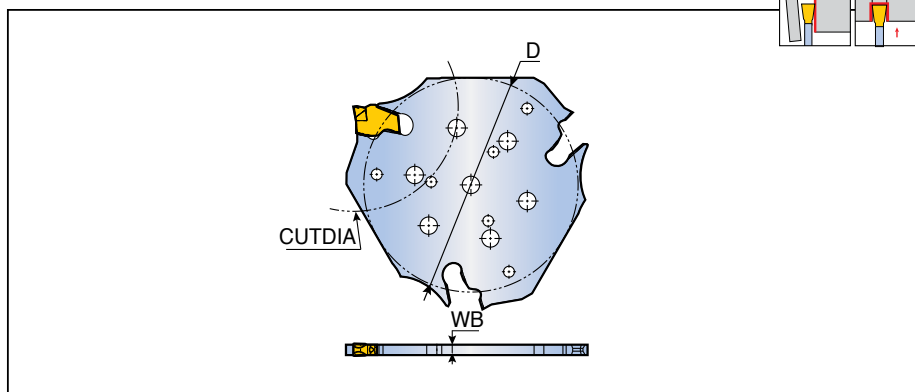
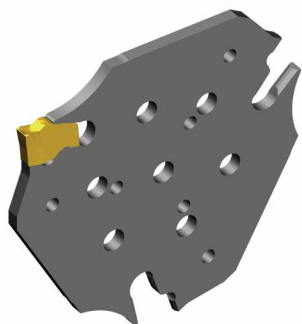


Triangular blade

SFTB




Triangular blades for parting and deep grooving



Designation	Insert seat size	Dimension (mm)			Block	Insert
		D	WB	CUTDIA		
SFTB D52-2	2	53.2	1.8	52	THTBR/L-TB	SFC SFJ
D52-3	3	53.2	2.5	52		
D82-2	2	64.3	1.8	82		
D82-3	3	64.3	2.5	82		
D120-2	2	85.5	1.8	120		
D120-3	3	85.5	2.5	120		

Spare parts

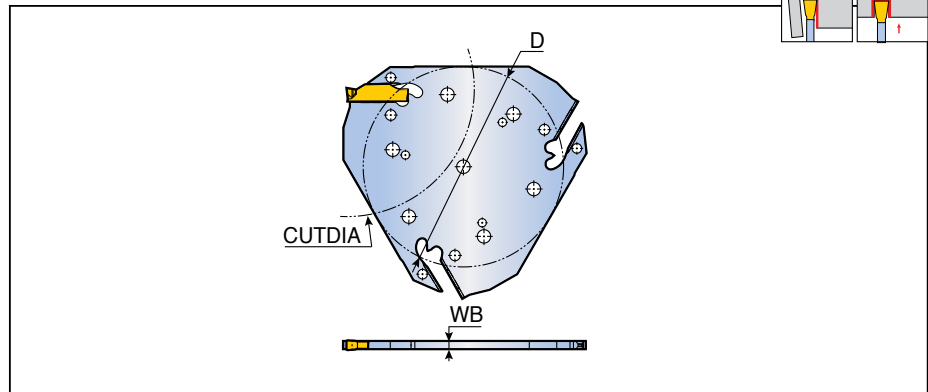
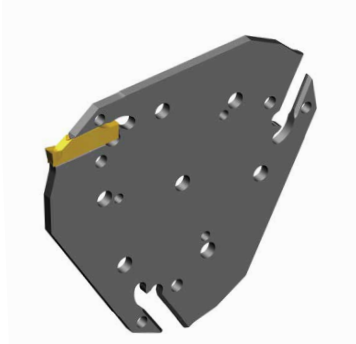
Designation	Extractor			
				
SFTB	ETG 3-4			

• Extractor should be ordered separately

TGTB

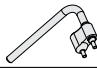


Triangular blades for parting and deep grooving



Designation	Insert seat size	Dimension (mm)			Block	Insert
		D	WB	CUTDIA		
TGTB D52-2	2	53.2	1.8	52	THTBR/L-TB	TDC / J / T / V / UF TDXU / XT TSC / J
D52-3	3	53.2	2.5	52		
D82-2	2	64.3	1.8	82		
D82-3	3	64.3	2.5	82		

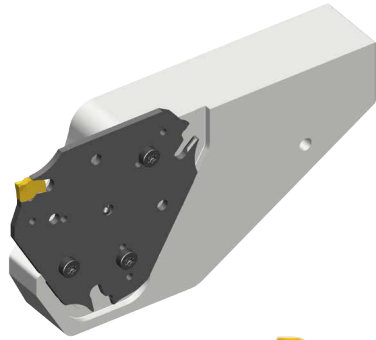
Spare parts

Designation	Extractor			
				
TGTB	EDG 33B			

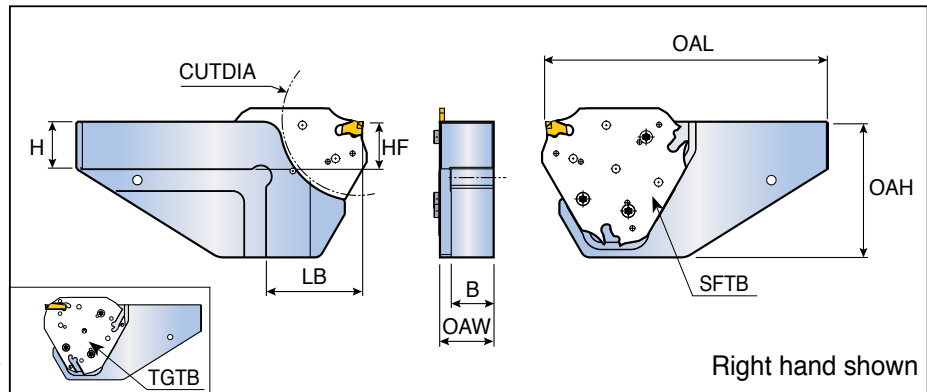
• Extractor should be ordered separately

THTBR/L-TB

Blocks for triangular blade



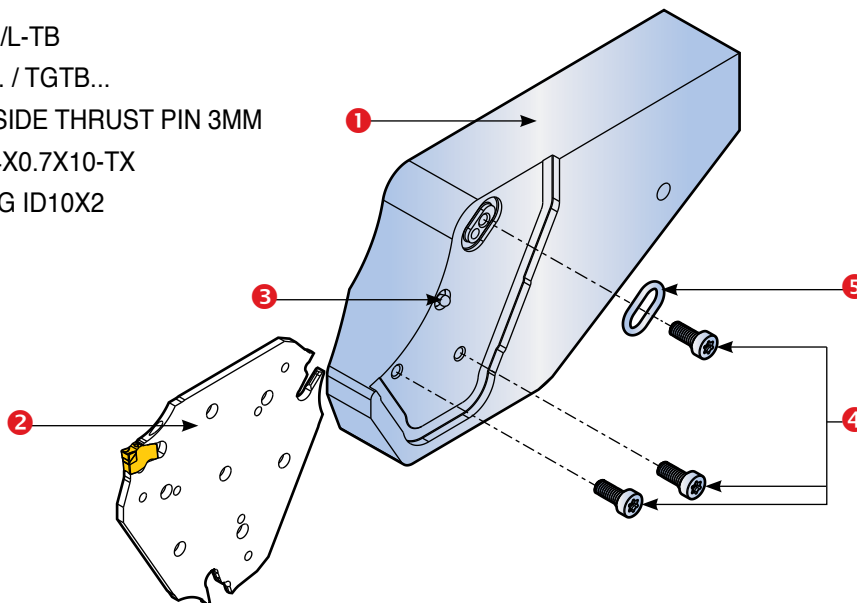
COOLBURST
ADVANCED COOLING



Right hand shown

Designation	Dimension (mm)								Blade
	H	HF	B	OAL	OAH	OAW	LB	CUTDIA	
THTBR/L 20-D52-TB	20	20	17.5	125	52	23.5	40	52	SFTB
25-D52-TB	25	25	22.5	135	52	28.5	40	52	TGTB
20-D82-TB	20	20	17.5	140	72	23.5	51.5	82	
25-D82-TB	25	25	22.5	150	72	28.5	51.5	82	
25-D120-TB	25	25	22.5	165	95	28.5	67	120	SFTB
32-D120-TB	32	32	29.0	165	95	35.0	67	120	

- 1 Block: THTBR/L-TB
- 2 Blade: SFTB... / TGTB...
- 3 Locating pin: SIDE THRUST PIN 3MM
- 4 Screw: SH M4X0.7X10-TX
- 5 O-ring: O-RING ID10X2



Spare parts

Designation	Locating pin	O-ring	Screw	Wrench
THTBR/L-TB	SIDE THRUST PIN 3MM	O-RING ID10X2	SH M4X0.7X10-TX	T 20

KIT COLLECTIONS

These kit products are available in the format listed below.



Cat. No.	Designation	Bill of materials	Qty.
6334857	KISFT-SFTB D120-2C TT9080	THTBR 25-D120-TB	1
		SFTB D120-2	1
		SFC 2 TT9080	3
		ETG 3-4	1
6334858	KISFT-SFTB D120-3C TT9080	THTBR 25-D120-TB	1
		SFTB D120-3	1
		SFC 3 TT9080	3
		ETG 3-4	1
6334859	KISFT-SFTB D52-2C TT9080	THTBR 25-D52-TB	1
		SFTB D52-2	1
		SFC 2 TT9080	3
		ETG 3-4	1
6334860	KISFT-SFTB D52-3C TT9080	THTBR 25-D52-TB	1
		SFTB D52-3	1
		SFC 3 TT9080	3
		ETG 3-4	1
6334861	KISFT-SFTB D82-2C TT9080	THTBR 25-D82-TB	1
		SFTB D82-2	1
		SFC 2 TT9080	3
		ETG 3-4	1
6334862	KISFT-SFTB D82-3C TT9080	THTBR 25-D82-TB	1
		SFTB D82-3	1
		SFC 3 TT9080	3
		ETG 3-4	1
6334863	KISFT-TGTB D52-2C TT9080	THTBR 25-D52-TB	1
		TGTB D52-2	1
		TSC 2 TT9080	3
		EDG 33B	1
6334864	KISFT-TGTB D52-3C TT9080	THTBR 25-D52-TB	1
		TGTB D52-3	1
		TSC 3 TT9080	3
		EDG 33B	1
6334865	KISFT-TGTB D82-2C TT9080	THTBR 25-D82-TB	1
		TGTB D82-2	1
		TSC 2 TT9080	3
		EDG 33B	1
6334866	KISFT-TGTB D82-3C TT9080	THTBR 25-D82-TB	1
		TGTB D82-3	1
		TSC 3 TT9080	3
		EDG 33B	1

KIT COLLECTIONS

These kit products are available in the format listed below.



Cat. No.	Designation	Bill of materials	Qty.
6337918	KISFS-SFTB D120-2C TT9080	THTBR 25-D120-TB	1
		SFTB D120-2	1
		SFC 2 TT9080	20
		ETG 3-4	1
6337919	KISFS-SFTB D120-3C TT9080	THTBR 25-D120-TB	1
		SFTB D120-3	1
		SFC 3 TT9080	20
		ETG 3-4	1
6337920	KISFS-SFTB D52-2C TT9080	THTBR 25-D52-TB	1
		SFTB D52-2	1
		SFC 2 TT9080	20
		ETG 3-4	1
6337921	KISFS-SFTB D52-3C TT9080	THTBR 25-D52-TB	1
		SFTB D52-3	1
		SFC 3 TT9080	20
		ETG 3-4	1
6337922	KISFS-SFTB D82-2C TT9080	THTBR 25-D82-TB	1
		SFTB D82-2	1
		SFC 2 TT9080	20
		ETG 3-4	1
6337923	KISFS-SFTB D82-3C TT9080	THTBR 25-D82-TB	1
		SFTB D82-3	1
		SFC 3 TT9080	20
		ETG 3-4	1
6337924	KISFS-TGTB D52-2C TT9080	THTBR 25-D52-TB	1
		TGTB D52-2	1
		TSC 2 TT9080	20
		EDG 33B	1
6337925	KISFS-TGTB D52-3C TT9080	THTBR 25-D52-TB	1
		TGTB D52-3	1
		TSC 3 TT9080	20
		EDG 33B	1
6337926	KISFS-TGTB D82-2C TT9080	THTBR 25-D82-TB	1
		TGTB D82-2	1
		TSC 2 TT9080	20
		EDG 33B	1
6337927	KISFS-TGTB D82-3C TT9080	THTBR 25-D82-TB	1
		TGTB D82-3	1
		TSC 3 TT9080	20
		EDG 33B	1