

NPN

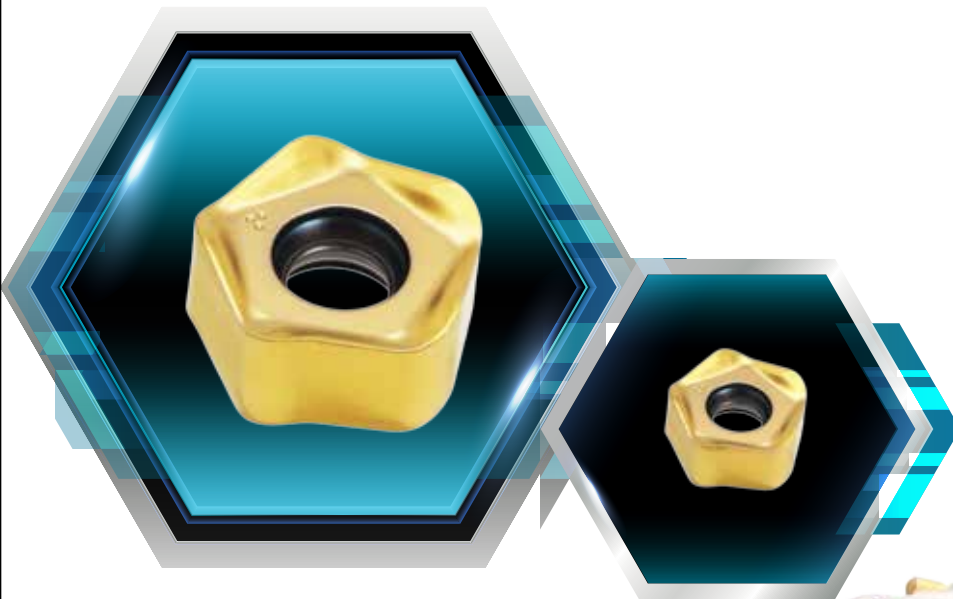
New Product News



CHASE 10 MILL

FACE MILLING

Economical, Ten Corner Double-Sided High Feed and Face Milling Line



KEY POINT

TaeguTec has launched a new high feed and face milling PTKU 05 and 10 insert and cutter line.

Responding to the demand for high feed, economical multi-corner inserts, TaeguTec has released the **CHASE-10-MILL** PTKU line.

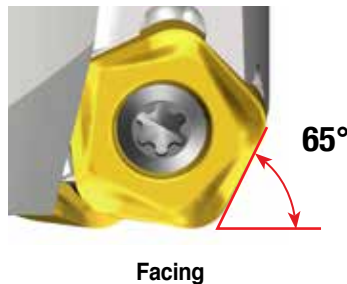
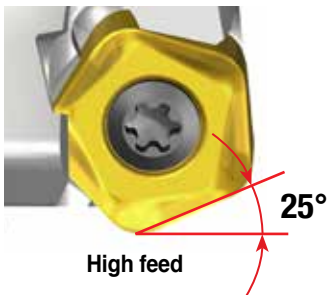
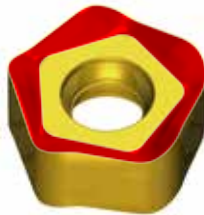
The PTKU inserts are a double-sided ten cutting edge line specifically dedicated to high feed machining. Available in two sizes: 05 mm and 10 mm; the new inserts have a maximum cutting depth of 1.5 mm and 3.0 mm, respectively. The PTKU line covers a wide industrial range including mold and die and general engineering applications.

The PTKU inserts can be applied to 65° entering angle facing together with high feed machining. This 65° entering angle machining combines the advantages of 45° excellent cutting and 75° large depths of cut machining. Face milling cutters can be used up to a maximum cutting depth of 3.3 mm and 6.5 mm.

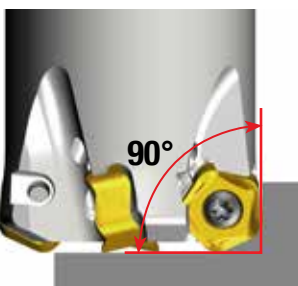
For further technical questions, please contact TaeguTec's product manager.

Features

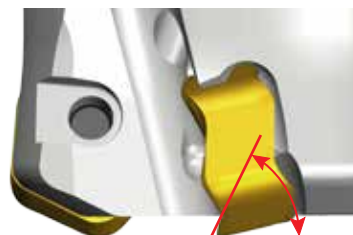
- Double-sided ten corner inserts
 - reinforced cutting edges
 - positive rake surface
- Same insert covers both high feed and facing applications



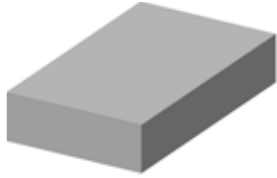
- Lower cutting force in deep cavity machining (High feed)



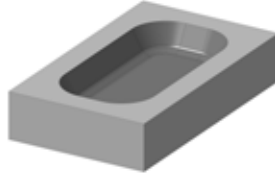
- High positive rake angle for smooth machining (High feed)



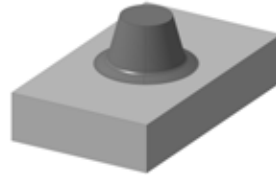
■ Detailed recommended applications



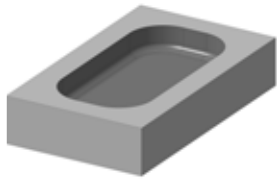
(◎)



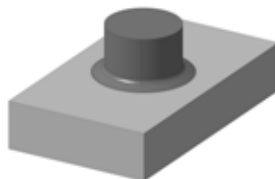
(◎)



(◎)



(○)



(○)

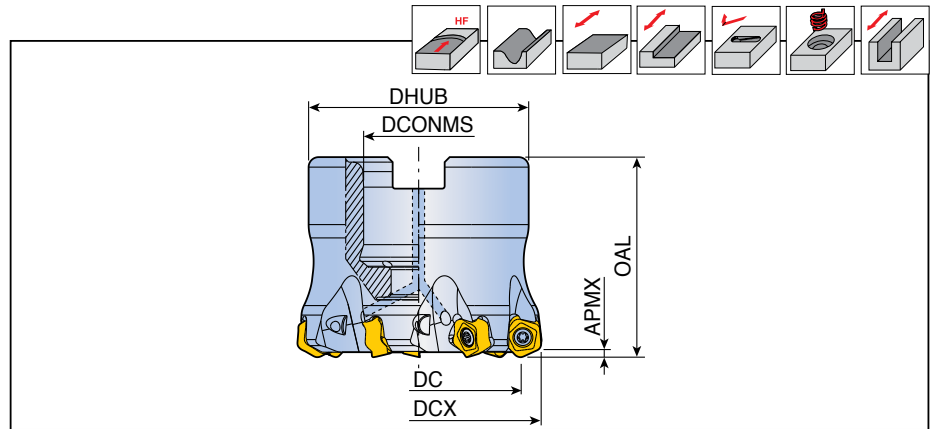
◎ : Recommended

○ : Optional



TFMPT-05

High feed face mills



Designation		Dimension (mm)						Coolant	Arbor type	Kg	Mounting bolt	Insert
		DCX	DC	DCONMS	DHUB	OAL	APMX					
TFMPT 640-16R-05	6	40	31.8	16	38	40	1.5	●	A	0.3	SH M8x25	PTKU 0503...
750-22R-05	7	50	41.8	22	45	40	1.5	●	A	0.4	LH M10x25	
752-22R-05	7	52	43.8	22	45	40	1.5	●	A	0.3	LH M10x25	
863-22R-05	8	63	54.8	22	58	50	1.5	●	A	0.8	SH M10x30	
866-27R-05	8	66	57.8	27	58	50	1.5	●	A	0.7	SH M12x35	

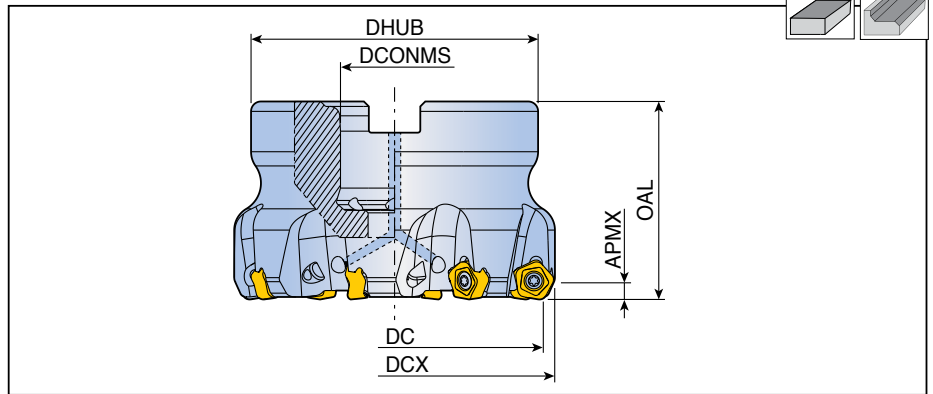
Spare parts

Designation	Screw	Wrench			
TFMPT-05	TS 25D060/HG-P	TD 7P			

TFM65PT-05



Face mills



Designation		Dimension (mm)						Coolant	Arbor type	Kg	Mounting bolt	Insert
		DC	DCX	DCONMS	DHUB	OAL	APMX					
TFM65PT 640-16R-05	6	40	43.7	16	38	40	3.3	•	A	0.3	SH M8x25	PTKU 0503...
750-22R-05	7	50	53.7	22	45	40	3.3	•	A	0.4	SH M10x30	
863-22R-05	8	63	66.7	22	58	40	3.3	•	A	0.7	SH M10x30	

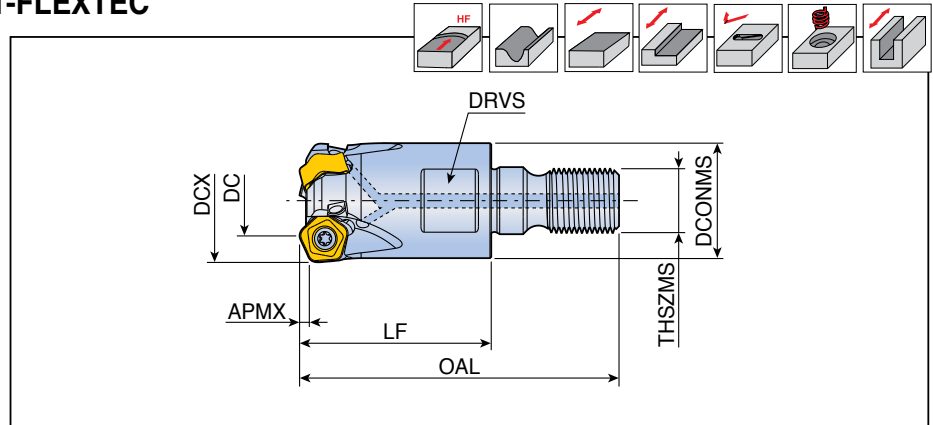
Spare parts

Designation	Screw	Wrench			
TFM65PT-05	TS 25D060/HG-P	TD 7P			

TEPT-M-05





High feed modular heads for T-FLEXTEC



Designation	⚙️	Dimension (mm)								Coolant	Insert
		DCX	DC	DCONMS	LF	OAL	THSZMS	APMX	DRVS		
TEPT 320-M10-05	3	20	11.9	18	30	50	M10	1.5	15	●	PTKU 0503...
425-M12-05	4	25	16.8	21	35	57	M12	1.5	17	●	
532-M16-05	5	32	23.8	29	43	68	M16	1.5	25	●	
640-M16-05	6	40	31.8	29	43	68	M16	1.5	25	●	

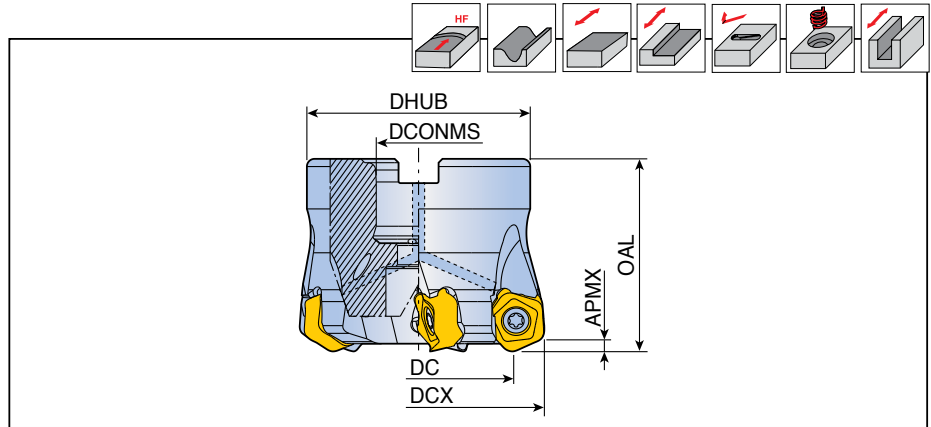
• Matched with T-FLEXTEC holder

Spare parts

Designation	Screw	Wrench			
	TEPT-05	 TS 25D060/HG-P	 TD 7P		




TFMPT-10

High feed face mills



Designation	Z	Dimension (mm)						Coolant	Arbor type	Kg	Mounting bolt	Insert
		DCX	DC	DCONMS	DHUB	OAL	APMX					
TFMPT 450-22R-10	4	50	33.4	22	45	40	3.0	●	E	0.3	TCS10-40	PTKU 1006...
563-22R-10	5	63	46.4	22	58	50	3.0	●	A	0.8	SH M10x30	
566-22R-10	5	66	49.4	22	58	50	3.0	●	A	0.8	SH M10x30	
680-27R-10	6	80	63.4	27	70	60	3.0	●	A	1.4	SH M12x30	
8100-32R-10	8	100	83.4	32	85	60	3.0	●	A	2.3	SH M16x35	
9125-32R-10	9	125	108.4	32	85	60	3.0	●	A	3.1	SH M16x35	
10160-40R-10	10	160	143.4	40	110	60	3.0	x	C	4.1	-	
12200-60R-10	12	200	183.4	60	130	60	3.0	x	C	5.7	-	

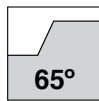
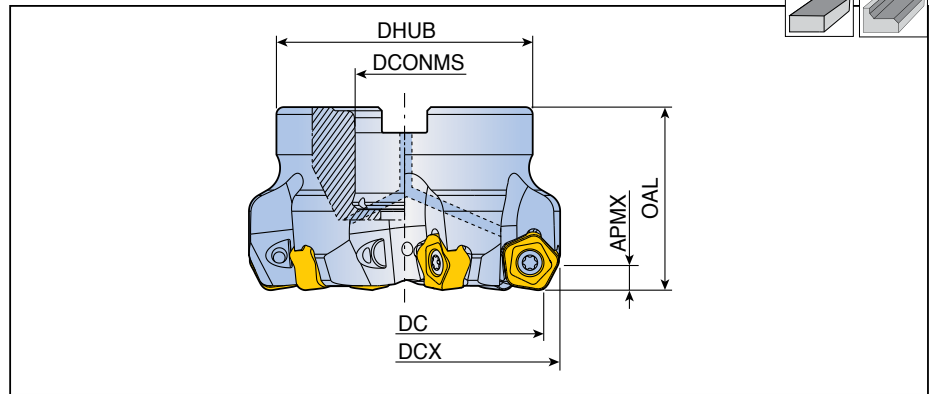
Spare parts

Designation	Screw	Wrench	Wrench handle		
					
TFMPT-10	TS 50D130/HG-P	TBLD T20P-W6	SW6-T		

TFM65PT-10



Face mills



Designation		Dimension (mm)						Coolant	Arbor type	Kg	Mounting bolt	Insert
		DC	DCX	DCONMS	DHUB	OAL	APMX					
TFM65PT 680-27R-10	6	80	87.4	27	70	50	6.5	●	A	1.2	LH M12x30	PTKU 1006...
8100-32R-10	8	100	107.4	32	85	50	6.5	●	A	1.9	LH M16x35	
9125-40R-10	9	125	132.4	40	85	63	6.5	●	A	3.2	SH M20x40	

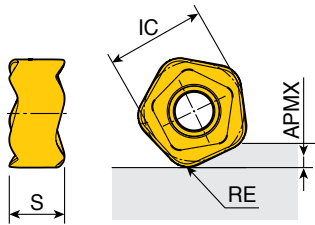
Spare parts

Designation	Screw	Wrench	Wrench handle		
TFM65PT-10	TS 50D130/HG-P	TBLD T20P-W6	SW6-T		

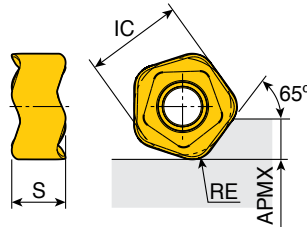
PTKU



Inserts

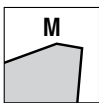


High feed



65°

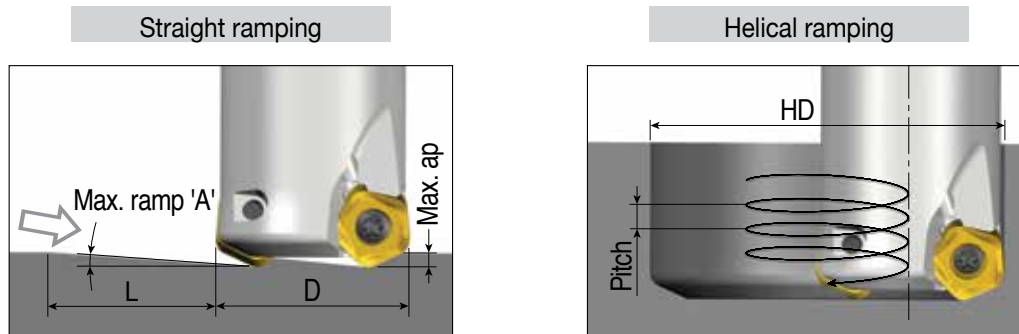
Size	Dimension (mm)					
	IC	S	APMX	RE		
05(HF)	7.1	3.8	1.5	1.5		
05(65°)	7.1	3.8	3.3	1.5		
10(HF)	14.2	7.7	3.0	3.0		
10(65°)	14.2	7.7	6.5	3.0		



Insert	Designation	Recommended machining conditions		Coated							Uncoated		
		ap (mm)	Feed (mm/tooth)	TT9080	TT9030	TT8080	TT8020	TT8525	TT7080	TT7515	TT6080	K10	
	PTKU 0503R-M (High feed)	0.2-1.5	1.20-0.20	●		●							
	1006R-M (High feed)	0.3-2.0	2.00-0.30	●		●							
	PTKU 0503R-M (65°)	1.0-3.0	0.20-0.07	●		●							
	1006R-M (65°)	1.5-5.0	0.25-0.10	●		●							

●: Standard items

Ramping Data

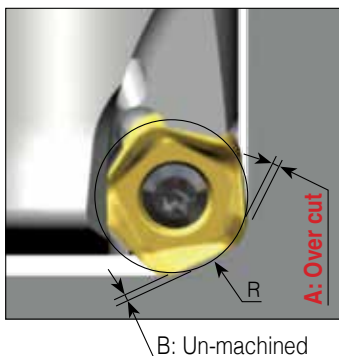


PTKU 05

(unit: mm)

Cutter dia.(D)	Straight ramp down			Helical ramp down			
	Max. ramp (A°)	Max. ap	Min. length (L)	Min. dia.(HD)	Max. dia.(HD)	Max. pitch/rev.	
Ø20	1.3	1.5	66	33	40	0.7	
Ø25	1.1		78	43	50	0.8	
Ø26	1.0		86	45	52	0.8	
Ø32	1.0		86	57	64	1.0	
Ø33	1.0		86	59	66	1.0	
Ø40	0.8		101	73	80	1.1	
Ø50	0.7		123	93	100	1.2	
Ø52	0.7		123	97	104	1.2	
Ø63	0.6		132	119	126	1.3	
Ø66	0.6		143	125	132	1.3	
						1.4	

Programming technical data



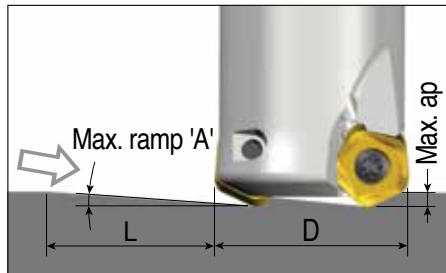
	R Program	A Over cut	B Un-machined
PTKU 05	2.5	0.00	0.83
	2.7	0.00	0.76
	3.0	0.04	0.66

Yellow background: Recommended program 'R'

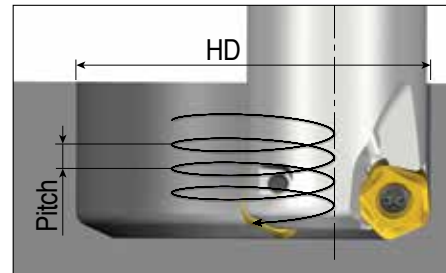
Ramping Data



Straight ramping



Helical ramping

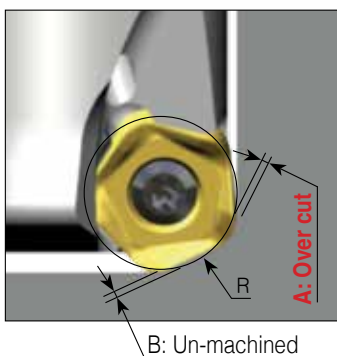


PTKU 10

(unit: mm)

Cutter dia.(D)	Straight ramp down			Helical ramp down		
	Max. ramp (A°)	Max. ap	Min. length (L)	Min. dia.(HD)	Max. dia.(HD)	Max. pitch/rev.
Ø40	1.5	3.0	111	63	80	1.7
Ø50	1.9		88	83	100	2.2
Ø63	1.7		101	109	126	2.8
Ø66	2.2		78	115	132	3.0
Ø80	1.5		115	143	160	3.0
Ø100	1.1		150	183	200	3.0
Ø125	0.8		202	233	250	3.0
Ø160	0.6		265	303	320	3.0
Ø200	0.5		344	383	400	3.0

Programming technical data



	R Program	A Over cut	B Un-machined
PTKU 10	5.5	0.00	1.45
	6.0	0.09	1.28
	6.5	0.21	1.11

 : Recommended program 'R'

KIT COLLECTIONS

These kit products are available in the format listed below.



Cat. No.	Designation	Bill of materials	Qty.
6334782	KISFT-TEPT 425-25-05-L150	TEPT 425-25-05-L150	1
		PTKU 0503R-M TT9080	8
6334783	KISFT-TEPT 532-32-05-L200	TEPT 532-32-05-L200	1
		PTKU 0503R-M TT9080	10
6334784	KISFT-TEPT 640-32-05-L200	TEPT 640-32-05-L200	1
		PTKU 0503R-M TT9080	12
6334785	KISFT-TFMPT 750-22R-05	TFMPT 750-22R-05	1
		PTKU 0503R-M TT9080	14
6334786	KISFT-TFMPT 450-22R-10	TFMPT 450-22R-10	1
		PTKU 1006R-M TT9080	8
6334787	KISFT-TFMPT 563-22R-10	TFMPT 563-22R-10	1
		PTKU 1006R-M TT9080	10
6334788	KISFT-TFMPT 680-27R-10	TFMPT 680-27R-10	1
		PTKU 1006R-M TT9080	12



Cat. No.	Designation	Bill of materials	Qty.
6337848	KISFS-TEPT 425-25-05-L150	TEPT 425-25-05-L150	1
		PTKU 0503R-M TT9080	50
6337849	KISFS-TEPT 532-32-05-L200	TEPT 532-32-05-L200	1
		PTKU 0503R-M TT9080	50
6337850	KISFS-TEPT 640-32-05-L200	TEPT 640-32-05-L200	1
		PTKU 0503R-M TT9080	50
6337851	KISFS-TFMPT 750-22R-05	TFMPT 750-22R-05	1
		PTKU 0503R-M TT9080	50
6337853	KISFS-TFMPT 450-22R-10	TFMPT 450-22R-10	1
		PTKU 1006R-M TT9080	50
6337854	KISFS-TFMPT 563-22R-10	TFMPT 563-22R-10	1
		PTKU 1006R-M TT9080	50
6337855	KISFS-TFMPT 680-27R-10	TFMPT 680-27R-10	1
		PTKU 1006R-M TT9080	50



Cat. No.	Designation	Bill of materials	Qty.
6338427	KISFF-A-PTKU 05-M TT9080	PTKU 0503R-M TT9080	100
6338428	KISFF-B-PTKU 05-M TT9080		300
6338429	KISFF-A-PTKU 10-M TT9080	PTKU 1006R-M TT9080	100
6338430	KISFF-B-PTKU 10-M TT9080		300