

NPN

New Product News



TANGSFEED

TANGENTIAL MILL

**Now Available in Ultra Small
05 Size Inserts and End Mills**



KEY POINT

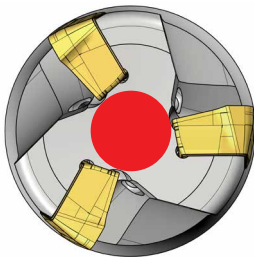
TaeguTec has expanded the TANG-SFEED line with new LPKU 05, LPHU 05 inserts and end mills.

TaeguTec has introduced a small 05 size insert to the Ø10 (2 teeth) end mill TANG-SFEED product line currently available in 09 and 14 sizes.

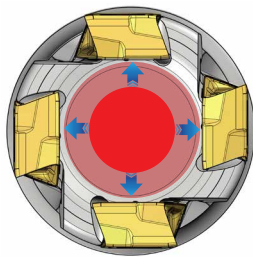
Along with the smaller size end mills, two new inserts have been added; a LPKU 05 utility type and a LPHU 05 precision type. Both inserts along with the end mills, modular head type are available in a 10 to 32 mm diameter range and extended flute end mills in a 16 to 25 mm diameter range.

TANG-SFEED product features

- Strong tangential type 4-corner insert
- Exact 90 degree shouldering
- Optimized geometry for smooth machining and improved stability
- Capable of straight and helical ramping machining
- Tangential cutter's larger diameter core offers a higher stiffness compared to the radial type cutter



Radial type



Tangential type (TANG-SFEED)

- Wide product line-up compared to competitors

TANG-SFEED cutters lineup by diameters

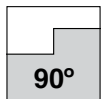
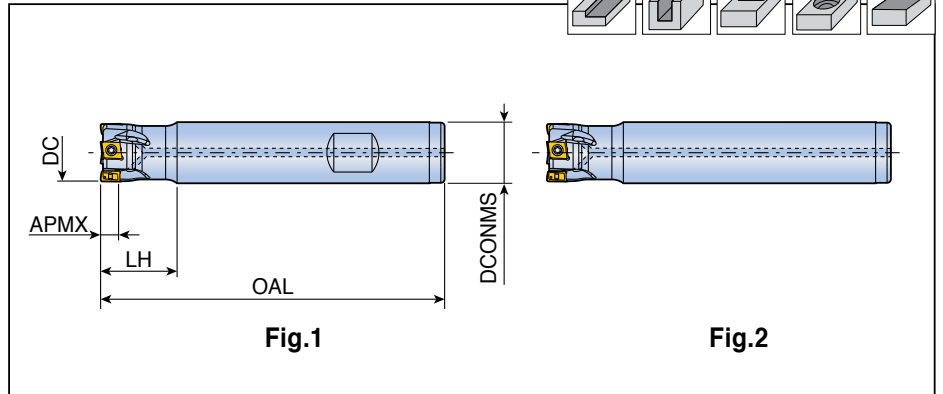
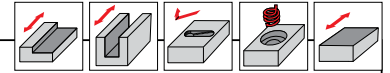
(mm)

	Ø10	Ø16	Ø20	Ø32	Ø40	Ø63	Ø100	Ø200
new LPK(H)U 05	2z	4z	5z	8z				
LPK(H)U 09			2z	5z	6z	10z		
LPK(H)U 14					4z	8z	12z	18z

4T-TE90-05

TANGSPEED
TANGENTIAL MILL

End mills

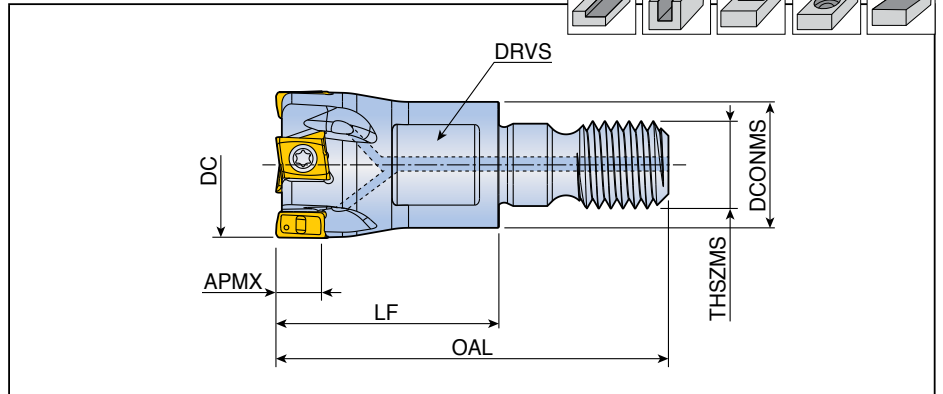
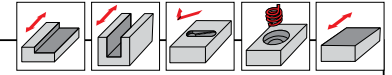
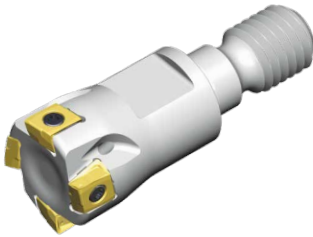


Designation		Dimension (mm)					Coolant hole	Fig.	Insert
		DC	DCONMS	OAL	LH	APMX			
4T-TE90-210-10-05	2	10	10	80	15	4.6	●	2	LPK(H)U 0502...
211-10-05	2	11	10	80	15	4.6	●	2	
212-12-05	2	12	12	80	15	4.6	●	2	
312-12-05	3	12	12	80	15	4.6	●	2	
313-12-05	3	13	12	80	15	4.6	●	2	
316-W16-05	3	16	16	90	20	4.6	●	1	
416-W16-05	4	16	16	90	20	4.6	●	1	
420-W20-05	4	20	20	100	25	4.6	●	1	
520-W20-05	5	20	20	100	25	4.6	●	1	
625-W25-05	6	25	25	110	30	4.6	●	1	
832-W25-05	8	32	25	110	20	4.6	●	1	

4T-TE90-M-05



Modular heads for T-FLEXTEC



Designation		Dimension (mm)							Coolant hole	Insert
		DC	DCONMS	LF	OAL	THSZMS	APMX	DRVS		
4T-TE90-210-M06-05	2	10	9.7	17	31.5	M06	4.6	8	●	LPK(H)U 0502...
312-M06-05	3	12	11	17	31.5	M06	4.6	8	●	
416-M08-05	4	16	13	23	40.5	M08	4.6	10	●	
520-M10-05	5	20	18	23	43	M10	4.6	15	●	
625-M12-05	6	25	21	27	49	M12	4.6	17	●	
832-M16-05	8	32	29	27	52	M16	4.6	25	●	

• Matched with T-FLEXTEC holder

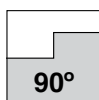
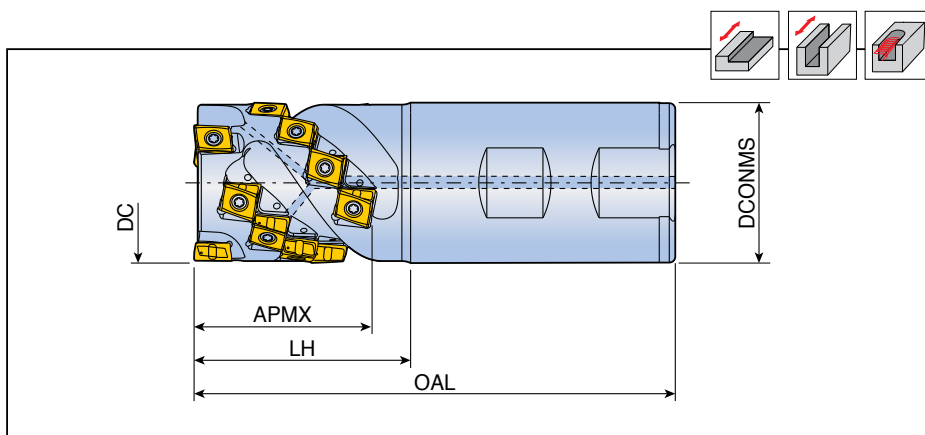
Spare parts

Designation	Screw	Wrench			
	4T-TE90-05	 TS 180411/SG-P	 TD 6P		



4T-TEF-05

Extended flute cutters



Designation		No. of insert	Dimension (mm)					Coolant hole	Insert
			DC	DCONMS	OAL	LH	APMX		
4T-TEF D16-15-W16-05	2	8	16	16	80	28	15	●	LPK(H)U 0502...
D20-23-W20-05	3	18	20	20	85	33	23	●	
D25-27-W25-05	4	28	25	25	95	35	27	●	

• Trochoidal machining capable

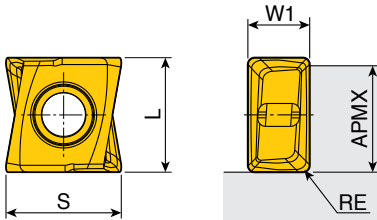
Spare parts

Designation	Screw 	Wrench 			
4T-TEF-05	TS 18041I/SG-P	TD 6P			

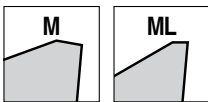




LPK(H)U

Inserts



Size	Dimension (mm)				
	L	W1	S	APMX	RE
05	5	2.7	5.0	4.6	0.4



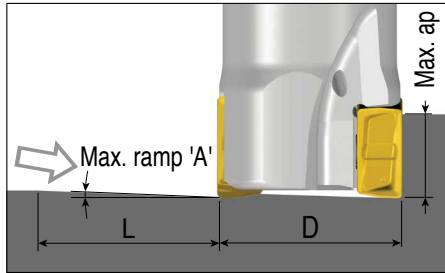
Insert	Designation	Recommended machining conditions		Coated								Uncoated		
		ap (mm)	Feed (mm/tooth)	TT9080	TT9030	TT8080	TT8020	TT8525B	TT7080	TT7515	TT6080	K10		
	LPKU 050204 PNR-M	1.0-3.5	0.08-0.04	●		●								
	LPHU 050204 PNR-ML	1.0-3.5	0.08-0.04			●					●			

●: Standard items

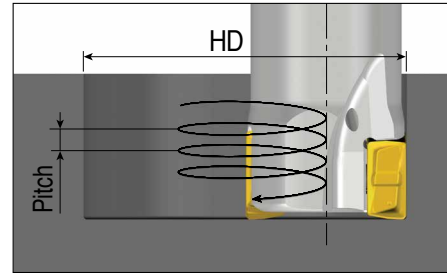
Ramping Data



Straight ramping



Helical ramping



LPK(H)U 05

(unit: mm)

Cutter dia.(D)	Straight ramp down			Helical ramp down		
	Max. ramp (A°)	Max. ap	Min. length (L)	Min. dia.(HD)	Max. dia.(HD)	Max. pitch/rev.
Ø10	1.8	4.6	142	16.8		0.6
					20	0.9
Ø11	1.6	4.6	160	18.8		0.6
					22	0.8
Ø12	1.5	4.6	176	20.8		0.6
					24	0.8
Ø13	1.3	4.6	195	22.8		0.6
					26	0.8
Ø16	1.0	4.6	251	28.8		0.6
					32	0.8
Ø20	0.8	4.6	330	36.8		0.6
					40	0.7
Ø25	0.6	4.6	439	46.8		0.6
					50	0.7
Ø32	0.4	4.6	586	60.8		0.6
					64	0.7

KIT COLLECTIONS

These kit products are available in the format listed below.



Cat. No.	Designation	Bill of materials	Qty.
6334791	KISFT-4T-TE90-210-10-05	4T-TE90-210-10-05	1
		LPKU 050204 PNR-M TT9080	4
6334792	KISFT-4T-TE90-312-12-05	4T-TE90-312-12-05	1
		LPKU 050204 PNR-M TT9080	6
6334793	KISFT-4T-TE90-416-W16-05	4T-TE90-416-W16-05	1
		LPKU 050204 PNR-M TT9080	8
6334794	KISFT-4T-TE90-520-W20-05	4T-TE90-520-W20-05	1
		LPKU 050204 PNR-M TT9080	10



Cat. No.	Designation	Bill of materials	Qty.
6337856	KISFS-4T-TE90-210-10-05	4T-TE90-210-10-05	1
		LPKU 050204 PNR-M TT9080	50
6337857	KISFS-4T-TE90-312-12-05	4T-TE90-312-12-05	1
		LPKU 050204 PNR-M TT9080	50
6337858	KISFS-4T-TE90-416-W16-05	4T-TE90-416-W16-05	1
		LPKU 050204 PNR-M TT9080	50
6337859	KISFS-4T-TE90-520-W20-05	4T-TE90-520-W20-05	1
		LPKU 050204 PNR-M TT9080	50



Cat. No.	Designation	Bill of materials	Qty.
6338431	KISFF-A-LPKU 05-M TT9080	LPKU 050204 PNR-M TT9080	100
6338432	KISFF-B-LPKU 05-M TT9080		300